

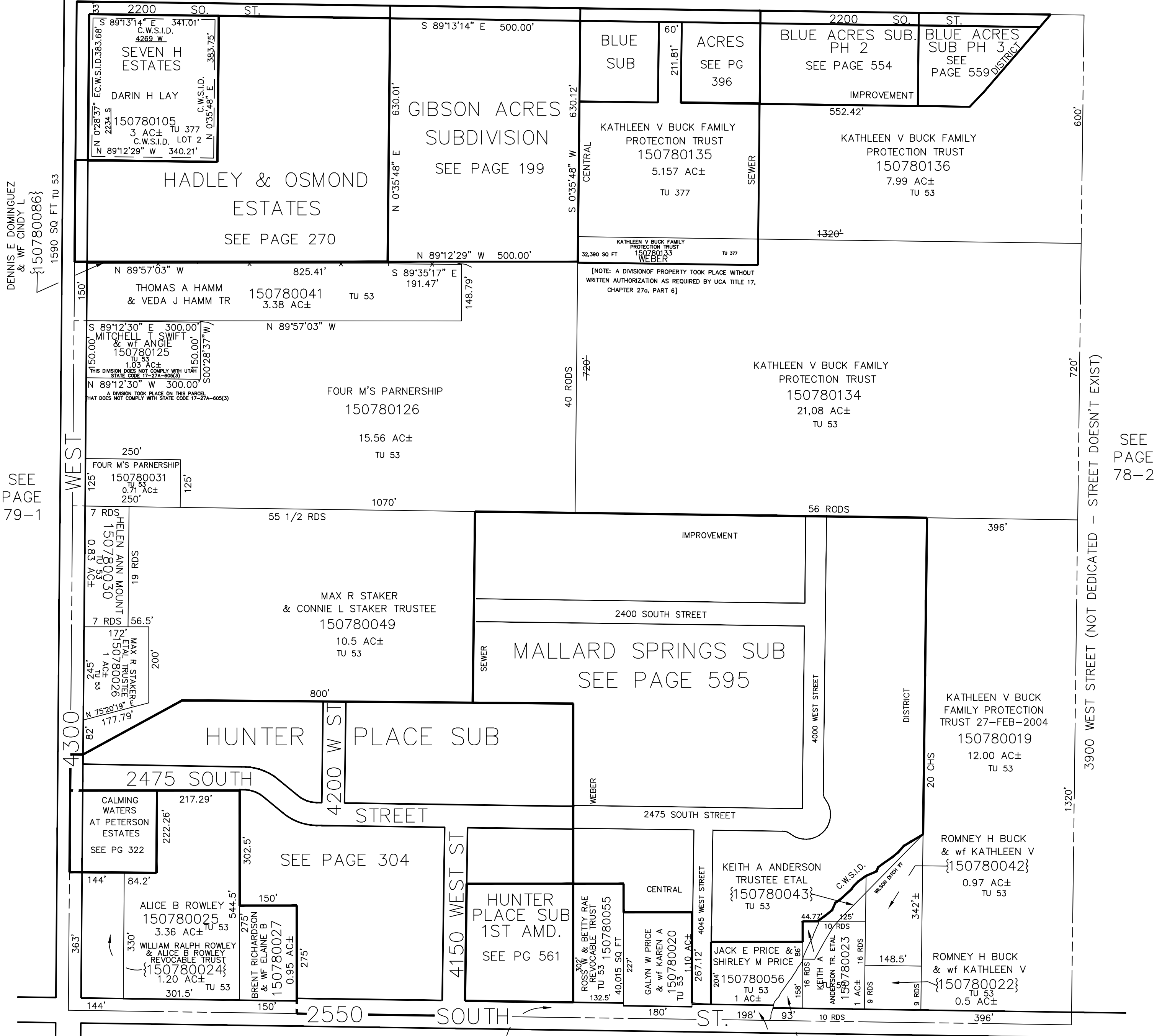
S.W. 1/4
SECTION 28, T.6N., R.2W., S.L.B. & M.

IN WEBER COUNTY

TAXING UNIT: 53, 377

SCALE 1" = 200'

SEE PAGE 78-4



DENNIS E DOMINGUEZ & WF CINDY L {150780086} 1590 SQ FT TU 53

SEE PAGE 79-1

15

SEE PAGE 90-1

WEBER COUNTY {150780038}

WEBER COUNTY {150780054}

{150780043}

SEE PAGE 91

SEE PAGE 78-2

3900 WEST STREET (NOT DEDICATED) - STREET DOESN'T EXIST